



## WILLIAMSON COUNTY GOVERNMENT

### MEMORANDUM

**TO:** Growth Plan Coordinating Committee

**FROM:** Mike Matteson, AICP, Planning Director

**DATE:** October 4, 2023

**SUBJECT:** County Planned Growth Area's

---

As you are aware, the County has proposed an amended set of Planned Growth Areas (PGAs), which have been shown to the Committee on multiple occasions. These proposed PGAs are based upon the recommendations of the County's Comprehensive Land Use Plan, and the cumulative acreage of land within the proposed PGAs has been significantly reduced from that of the current PGAs.

As we discussed with the Committee previously, the County has been asked to add some additional properties to the Triune and Arrington PGAs (See Figures 1 and 2 below). These requests were made after the County held its two Public Hearings, and as a result, there has not been public comment regarding the potential inclusion of these properties in the respective PGAs. Additionally, the County will be conducting a Special Area Plan for Arrington in the near future, and the study area that has been identified for that plan is slightly larger than the currently-proposed PGA. As a result, staff will be seeking public comment regarding expanding this PGA to coincide with the study area of the Special Area Plan.

At this time, the County is not proposing a change in its PGAs. However, the County would like these potential changes to be subject to public comment during the two upcoming Coordinating Committee Public Hearings. Following the Public Hearings, the County will determine whether or not to modify its proposed PGA's.

Figure 1: Triune PGA

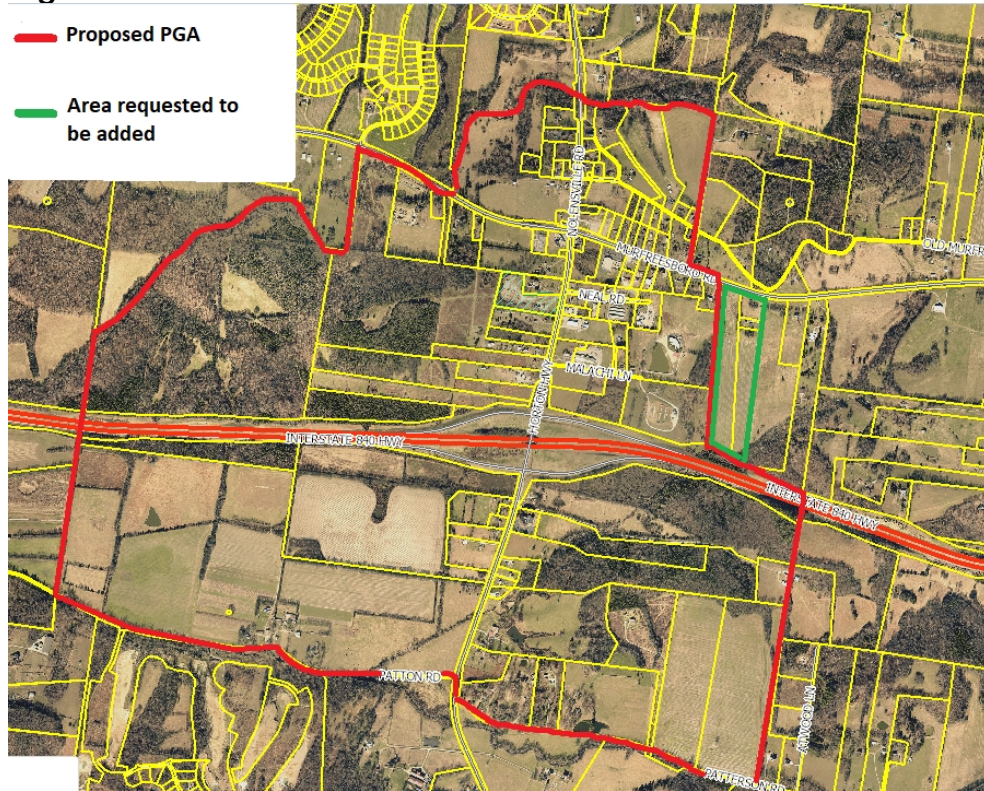


Figure 2: Arrington PGA

